

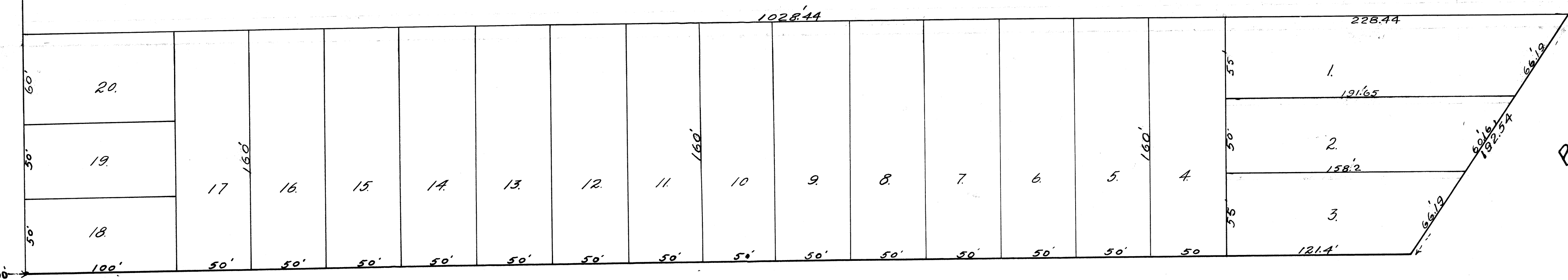
SEE CORNER
D.L.C. # 39

9453'

S.T.

TOWA

60'



AVERY STREET

STREET

GARFIELD STREET

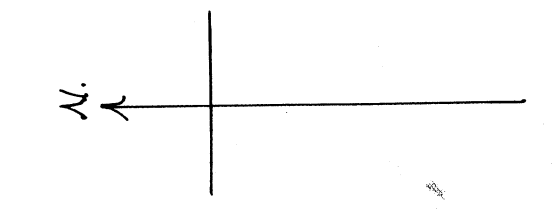
STREET

BOULEVARD

**PLAT OF
BUNGALOW ADDITION
TO THE CITY OF
ASHLAND, OREGON**

SCALE 1" = 50'

Nov. 1911



SURVEYORS AFFIDAVIT AND DESCRIPTION OF BOUNDARY
 This is to certify that I, F. M. Walker did on Sept. 28-29, 1911 correctly survey and stake out the lands as shown by map hereon, being a part of the City of Ashland, Jackson County, Oregon. Said map is a correct representation of said survey as made by me on the ground, and that said survey is tied in to the S.E. Corner of D.L.C. # 39, T. 39 S., R. 1 E. of W.M. of Oregon, where there is planted a 2" iron pipe.
 The location and outside boundary description of land platted is as follows: Beginning at the S.E. Corner of D.L.C. # 39 and running thence west along the South line of D.L.C. # 39 a distance of 1028.44 ft. and thence South at right angles 30 ft. to a point which is the place of beginning and which is the intersection of the South line of Iowa St. with the East line of Garfield St. Thence South along the East line of Garfield St. a distance of 921.4 ft. to an intersection with the North line of Boulevard; thence South 58° 13' E. along the North line of Boulevard a distance of 192.57 ft.; thence North parallel to Garfield St. and 160 ft. distant therefrom at right angles, a distance of 1028.44 ft. to an intersection with the South line of Iowa St.; thence West along the South line of Iowa St. a distance of 180 ft. to the place of beginning.
 In witness whereof I have hereunto set my hand and seal this 31st day of October 1911
 F. M. Walker

Subscribed and sworn to before me this 31st day of October 1911
 W. E. Dickey
 Notary Public for Oregon

DEDICATION.
 State of Oregon } Know all men by these presents that we Frank Jordan, Mabel H. County of Jackson } Jordan his wife, and E. N. Smith are the owners of above described tract of land and have caused the same to be surveyed and sub-divided as shown by map hereon, and that said map is a correct representation of said survey; the length and courses of the lines on said plat are indicated by signs, letters and figures in witness whereof we have hereunto set our hands and seal this 31st day of October 1911
 Done in presence of
 W. E. Dickey
 Notary Public for Oregon
 F. M. Walker
 E. N. Smith

State of Oregon } This is to certify that on this 28th day of October 1911, before me a County of Linn } Notary Public, personally appeared the above named Frank Jordan and Mabel H. Jordan his wife personally known to me to be the persons described in, and who executed the foregoing dedication, and acknowledged to me that they executed the same freely and voluntarily and without fear or compulsion from any one
 In testimony whereof I have hereunto set my hand and seal this 28th day of October 1911
 State of Oregon } This is to certify that on this 28th day of October 1911, before me a County of Jackson } a Notary Public, personally appeared the above named E. N. Smith, personally known to me to be the person described in, and who executed the foregoing dedication, and acknowledged to me that he executed the same freely and voluntarily and without fear or compulsion from any one.
 In testimony whereof I have hereunto set my hand and seal this 28th day of October 1911
 W. E. Dickey
 Notary Public for Oregon

Approved by the City Engineer on the 28th day of October 1911
 City Engineer
 Approved by the City Recorder on the 28th day of October 1911
 City Recorder
 Approved by the Common Council of Ashland on the 28th day of October 1911
 City Recorder
 Approved by the County Assessor on the 28th day of October 1911
 County Assessor
 Approved by the County Court of Jackson County on the 28th day of October 1911
 County Clerk
 Filed with the County Recorder on the 31st day of October 1911
 and duly recorded in Volume 14 - Page 100
 County Recorder
 Filed with the County Clerk on the 31st day of October 1911
 County Clerk