

**ALTA VISTA HEIGHTS SUBDIVISION**  
 LOCATED IN SECTION II, T. 36 S., R. 1 W., W.M.  
 JACKSON COUNTY, OREGON  
**DEDICATION**

KNOW ALL MEN BY THESE PRESENTS THAT WE ELBERT M. BIGHAM AND LAURA BIGHAM AND THE ALTA VISTA HEIGHTS SUBDIVISION, AN OREGON PARTNERSHIP COMPOSED OF GEORGE A. JOHNS AND N. A. MEAD ARE OWNERS IN FEE SIMPLE OF THE LANDS HEREON DESCRIBED AND THAT WE HAVE SUBDIVIDED THE SAME INTO LOTS, BLOCKS AND STREETS AS SHOWN HEREON, AND THE NUMBER AND SIZE OF THE LOTS AND LENGTH OF ALL LINES ARE PLAINLY SET FORTH, AND THAT THIS PLAT IS A CORRECT REPRESENTATION OF THE SAID SUBDIVISION, AND WE DO HEREBY DEDICATE TO THE PUBLIC FOR PUBLIC USE, ALL STREETS AND PUBLIC UTILITY EASEMENTS, SHOWN HEREON, AND WE DO HEREBY DESIGNATE SAID SUBDIVISION AS THE ALTA VISTA HEIGHTS SUBDIVISION.

IN WITNESS WHEREOF WE HAVE SET OUR HANDS AND SEALS THIS 29 DAY OF JANUARY 1965.

ALTA VISTA HEIGHTS SUBDIVISION  
 (AN OREGON PARTNERSHIP)

*George A. Johns*  
 GEORGE A. JOHNS (PARTNER)

*Elbert M. Bigham*  
 ELBERT M. BIGHAM

*N. A. Mead*  
 N. A. MEAD (PARTNER)

*Laura Bigham*  
 LAURA BIGHAM

STATE OF OREGON } SS  
 County of Jackson

A. D. 1965

PERSONALLY APPEARED THE ABOVE NAMED GEORGE A. JOHNS AND N. A. MEAD, REPRESENTING AN OREGON PARTNERSHIP, (THE ALTA VISTA HEIGHTS SUBDIVISION) AND ELBERT M. BIGHAM AND LAURA BIGHAM AND ACKNOWLEDGED THE FORGOING INSTRUMENT TO BE THEIR VOLUNTARY ACT AND DEED BEFORE ME:

MY COMMISSION EXPIRES THE 17 DAY OF October 1966.

*P. Mushany*  
 NOTARY PUBLIC FOR OREGON

Examined and approved by the Jackson County Planning Commission in regular session this 2 day of March 1965

Attest: *A. S. Silveira* Secretary  
*Genald T. Rathen* President

Examined and approved by the Eagle Point Irrigation District in regular session this 2<sup>nd</sup> day of February 1965

Attest: *C. J. Kelley* Secretary  
*Boyan Draeger* President

Examined and approved this 19<sup>th</sup> day of February 1965

*Ibad W. Hatten*  
 County Assessor

All taxes paid in full to date this the 25 day of Feb 1965

*Ormond High*  
 County Sheriff

Examined and recommended for approval by the County Court this the 25<sup>th</sup> day of FEBRUARY 1965

*Jack E. Coyle*  
 County Surveyor

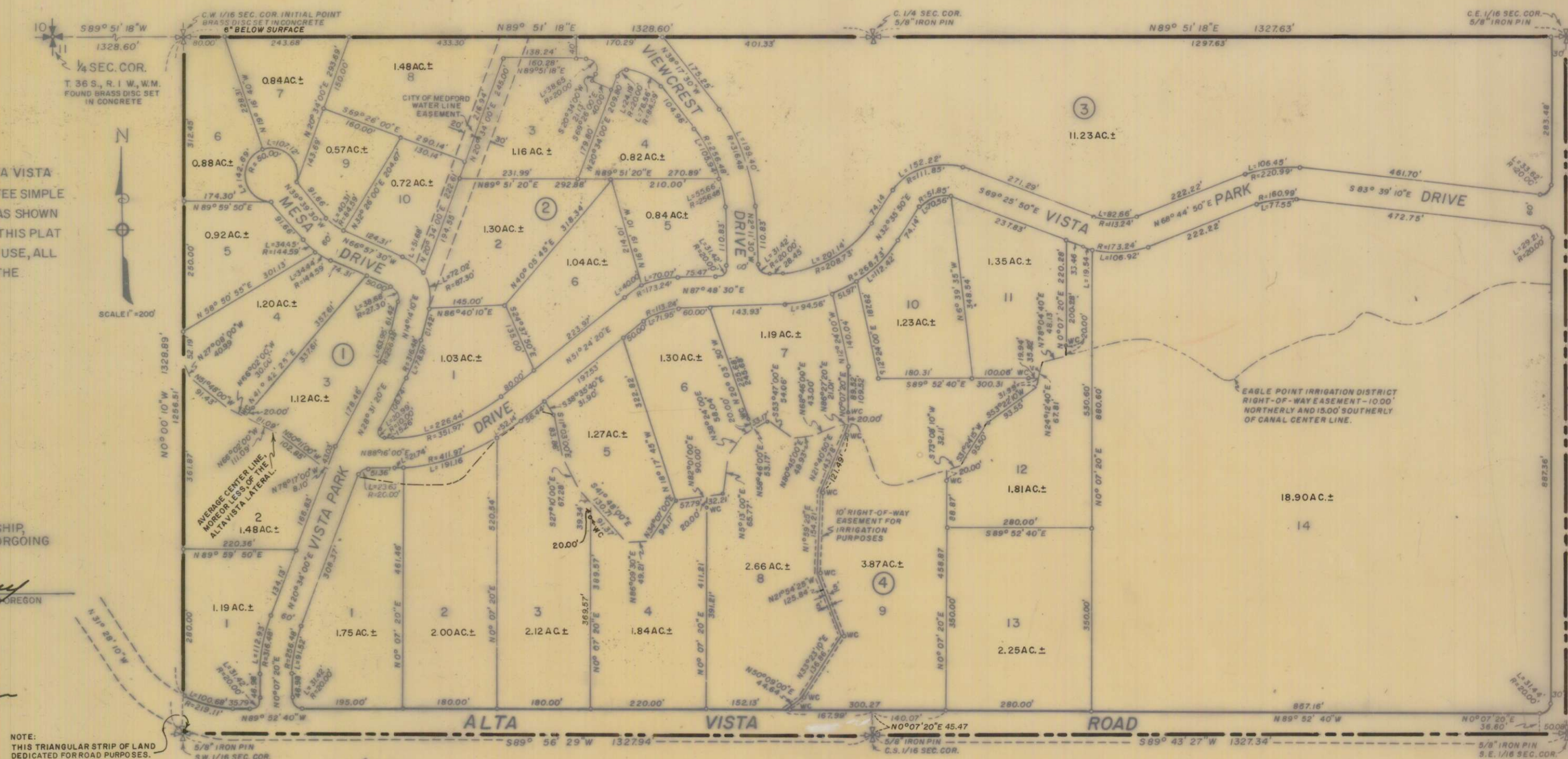
For Order of the County Court approving this plat see Volume \_\_\_\_\_ page \_\_\_\_\_ of County Commissioners Journal of Proceedings.

By *Emm Jell* Deputy  
 County Clerk

Filed for record this the 8 day of June, 1965, at 4:06 O'Clock P M and recorded in Volume 10 of plats at page 4 of Records of Jackson County

*Emm Jell*  
 County Clerk

By \_\_\_\_\_ Deputy

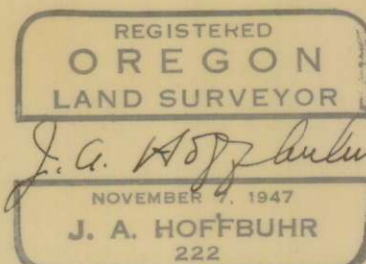


NOTE: THIS TRIANGULAR STRIP OF LAND DEDICATED FOR ROAD PURPOSES.

BEARINGS FROM RECORDED SURVEY NO. 1727  
 SET 5/8 X 3/4" IRON REINFORCING PINS ON ALL LOT CORNERS. SET 5/8 X 24" IRON REINFORCING PINS ON ALL LOT CORNERS, APPROXIMATELY FLUSH WITH GROUND SURFACE.

I hereby certify that this tracing is an exact copy of the original plat filed with the County Clerk.

*J. A. Hoffbuhr*  
 Surveyor



**SURVEYOR'S CERTIFICATE**

STATE OF OREGON } SS  
 County of Jackson

I, J. A. Hoffbuhr a duly registered surveyor of the State of Oregon, being duly sworn, do hereby certify that I have correctly surveyed and marked with proper monuments as provided by law the tract of land hereon shown and said plat is a correct representation of the same, and the following is an accurate description of the boundary lines:

COMMENCING AT A BRASS DISC SET IN CONCRETE FOR THE INITIAL POINT MONUMENT, AT THE CENTER WEST ONE SIXTEENTH (1/16) CORNER OF SECTION II, TOWNSHIP 36 SOUTH, RANGE 1 WEST, WILLAMETTE MERIDIAN, JACKSON COUNTY, OREGON, FROM WHICH THE WEST ONE QUARTER (1/4) CORNER OF SECTION II, SAID TOWNSHIP AND RANGE, BEARS SOUTH 89° 51' 18" WEST 1328.60 FEET; THENCE NORTH 89° 51' 18" EAST 1328.60 FEET TO A 5/8 INCH IRON PIN SET FOR THE CENTER ONE QUARTER (1/4) CORNER OF SAID SECTION II; THENCE CONTINUE NORTH 89° 51' 18" EAST 1327.63 FEET TO A 5/8 INCH IRON PIN SET FOR THE CENTER EAST ONE SIXTEENTH (1/16) CORNER OF SAID SECTION II; THENCE SOUTH 0° 02' 21" WEST 1327.86 FEET TO A 5/8 INCH IRON PIN SET FOR THE SOUTH-EAST ONE SIXTEENTH (1/16) CORNER OF SAID SECTION II; THENCE SOUTH 89° 43' 27" WEST 1327.34 FEET TO A 5/8 INCH IRON PIN SET FOR THE CENTER SOUTH ONE SIXTEENTH (1/16) CORNER OF SAID SECTION II; THENCE SOUTH 89° 56' 29" WEST 1327.94 FEET TO A 5/8 INCH IRON PIN SET FOR THE SOUTHWEST ONE SIXTEENTH (1/16) CORNER OF SAID SECTION II; THENCE NORTH 0° 00' 10" WEST 1328.89 FEET TO THE INITIAL POINT.

*J. A. Hoffbuhr*  
 Surveyor

Subscribed and sworn to before me this 26<sup>th</sup> day of January 1965

*P. Mushany*  
 NOTARY PUBLIC FOR OREGON

My Commission Expires the 17 day of October 1966

Examined and approved by the Eagle Point Planning Commission in regular session this 12 day of February 1965

Attest: *Oran C. Chastain* Secretary  
*Larry Register* President