

STAGE COACH HILLS SUBDIVISION UNIT NO. 1

LOCATED IN SECTION 32, T. 37 S., R. 2 W., W.M., JACKSON COUNTY, OREGON

DEDICATION

KNOW ALL MEN BY THESE PRESENTS that we Stagecoach Properties Incorporated, an Oregon Corporation are the owners in fee simple of the lands hereon described and that we have subdivided the same into lots, blocks, and streets as shown hereon, and the number and size of the lots and the length of all lines are plainly set forth, and that this plat is a correct representation of the said subdivision, and we do hereby dedicate to the public for public use all streets and utility easements shown hereon and we do hereby designate said subdivision as, STAGE COACH HILLS SUBDIVISION - UNIT NO. 1.

IN WITNESS WHEREOF we have set our hands and seals this 5th day of August 1965

Kenneth H. Jones
President

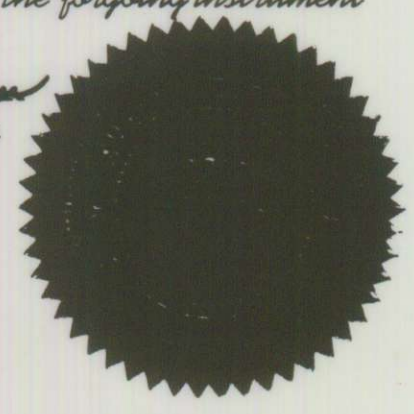
Stanley C. Jones Jr.
Secretary

STATE OF OREGON }
County of Jackson } SS

August 5 A.D. 1965

Personally appeared the aboved named Kenneth H. Jones, President and Stanley C. Jones Jr. Secretary of Stagecoach Properties Incorporated, an Oregon Corporation, and acknowledged the forgoing instrument to be their voluntary act and deed. Before me:

Emory E. Jordan
Notary Public for Oregon



My Commission expires the 1st day of May 1966

Examined and approved by the Jacksonville City Planning Commission in regular session this 2nd day of Sept. 1965.

Attest: *James D. Skog Sr.* Secretary, *Albert Heavers* President

I hereby certify that this tracing is an exact copy of the original plat filed with the County Clerk.

J. A. Hoffbuhr
Surveyor

Examined and approved this 17th day of September 1965

Thad W. Batten by
County Assessor *Paul M. Bartney*, Deputy

All taxes paid in full to date this the 17th day of Sept. 1965

Clarence Jordan
County Sheriff

Examined and recommended for approval by the County Court this the 8th day of OCTOBER 1965.

Jack E. Fowler
County Surveyor

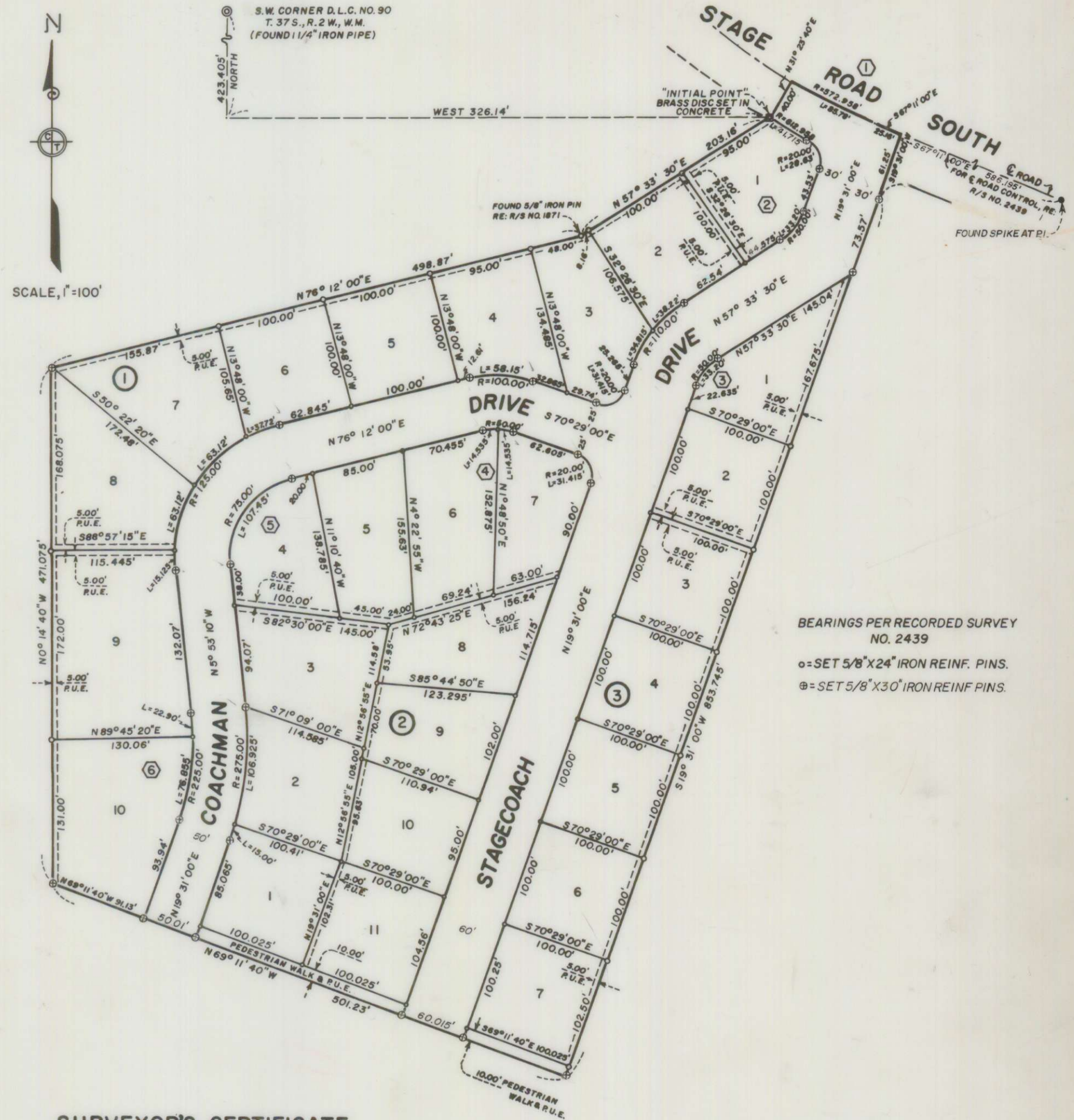
For Order of the County Court approving this plat see Volume _____ page _____ of County Commissioners Journal of Proceedings

By: *Emory E. Jordan*
Deputy County Clerk

637150
Filed for record this the 13th day of October 1965 at 4:14 O'clock P.M. and recorded in Volume 10 of Plats at page 18 of Records of Jackson County, Oregon.

By: *Emory E. Jordan*
County Clerk

By: _____
Deputy



SURVEYOR'S CERTIFICATE

STATE OF OREGON }
County of Jackson } SS

I, J. A. Hoffbuhr a duly registered Surveyor of the State of Oregon, being first duly sworn, do hereby certify that I have correctly surveyed and marked with the proper monuments as provided by law the tract of land hereon shown and the said plat is a correct representation of the same, and the following is an accurate description of the boundary lines:

COMMENCING AT A BRASS DISC SET IN CONCRETE (INITIAL POINT), ON THE SOUTHWESTERLY RIGHT OF WAY LINE OF STAGE ROAD SOUTH, FROM WHICH THE SOUTHWEST CORNER OF DONATION LAND CLAIM NO. 90, TOWNSHIP 37 SOUTH, RANGE 2 WEST, WILLAMETTE MERIDIAN, JACKSON COUNTY, OREGON, BEARS WEST 326.14 FEET AND NORTH 423.405 FEET; THENCE NORTH 31° 23' 40" EAST 40.00 FEET TO INTERSECT SAID ROAD CENTERLINE; THENCE ALONG THE ARC OF A 572.958 FOOT RADIUS CURVE TO THE LEFT 85.78 FEET (THE LONG CHORD WHICH BEARS, SOUTH 62° 53' 40" EAST 85.70 FEET) TO A POINT OF TANGENT; THENCE SOUTH 67° 11' 00" EAST 25.16 FEET; THENCE SOUTH 19° 31' 00" WEST 61.25 FEET; THENCE CONTINUE SOUTH 19° 31' 00" WEST 853.745 FEET; THENCE NORTH 69° 11' 40" WEST 501.23 FEET; THENCE NORTH 0° 14' 40" WEST 471.075 FEET; THENCE NORTH 76° 12' 00" EAST 498.87 FEET; THENCE NORTH 57° 33' 30" EAST 203.16 FEET TO THE INITIAL POINT.

Subscribed and sworn to before me this 9th day of August 1965.

J. A. Hoffbuhr
Surveyor
My Commission Expires the 15th day of November 1966

STREET & CURVE DATA					
①	②③	④	⑤	⑥	
Δ=16° 33' 40"	Δ=38° 02' 30"	Δ=33° 19' 00"	Δ=82° 06' 10"	Δ=25° 24' 10"	
R=872.958'	R=80.00'	R=75.00'	R=100.00'	R=250.00'	
S=83.387'	S=27.579'	S=22.442'	S=87.081'	S=56.346'	
U=185.036'	U=52.146'	U=43.000'	U=131.326'	U=109.834'	
L=185.811'	L=53.116'	L=43.811'	L=143.267'	L=110.841'	

