

# THORNTON SUBDIVISION

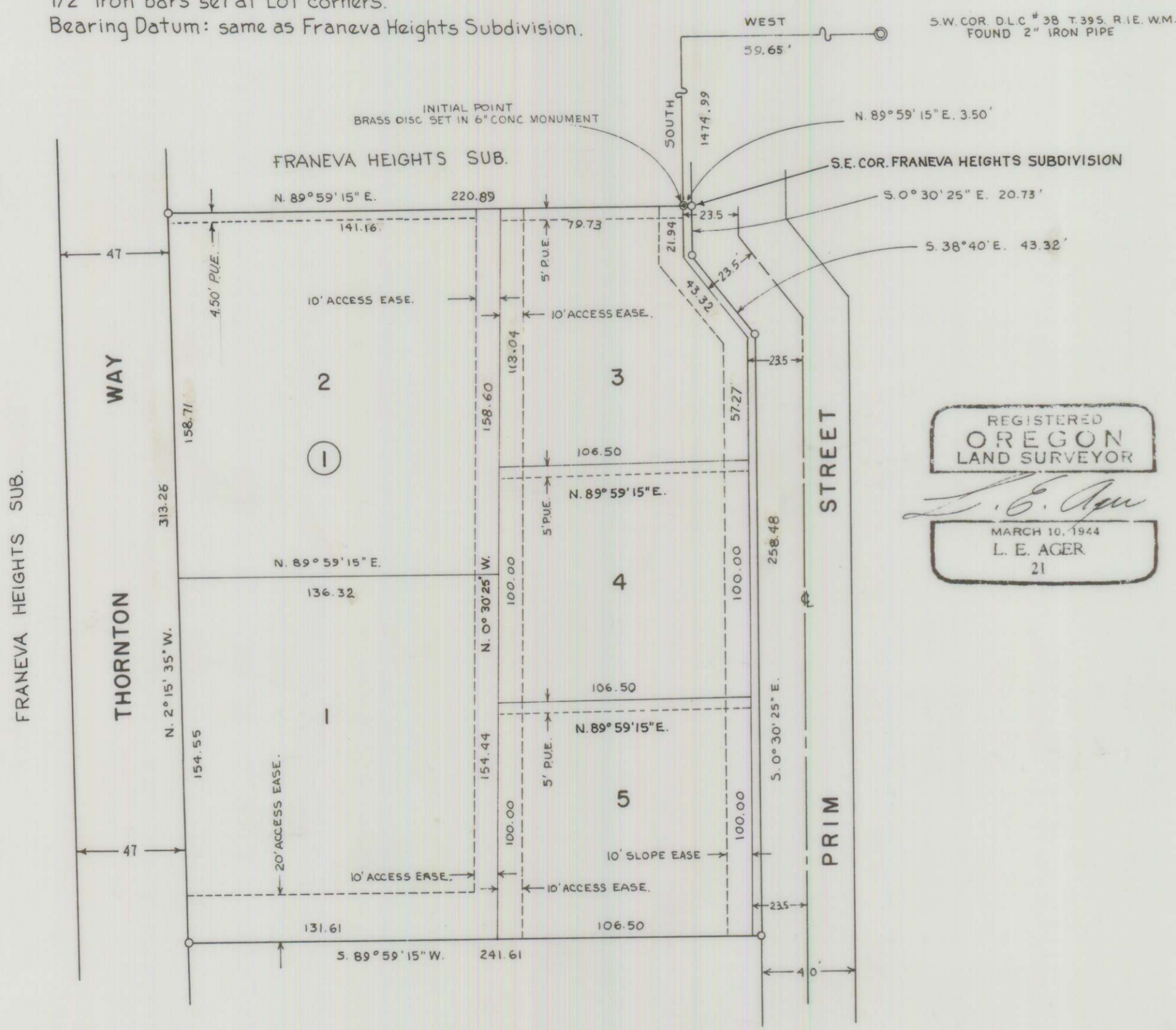
PORTION OF LOTS 9, 10, 15 AND 16, OF THE NICKELL PLATE ADDITION, IN THE CITY OF ASHLAND, JACKSON COUNTY, OREGON. LOCATED IN SEC. 5, T. 39 S., R. 1 E., W. M.

DATE: APRIL 14, 1966

SCALE: 1" = 50'

LEGEND  
PUE Public Utility Easement.

5/8" Iron bars set at Block corners.  
1/2" Iron bars set at Lot corners.  
Bearing Datum: same as Franeva Heights Subdivision.



### DEDICATION

KNOW ALL MEN BY THESE PRESENTS, that we, Richard H. Thornton and Adleen A. Thornton, are the owners in fee simple of the lands hereon described, and that we have subdivided the same into lots, blocks and streets as shown hereon, and the number and size of lots, blocks and the length of all lines are plainly set forth and the width of all streets, easements and alleys are plainly shown, and that this plat is a correct representation of the said subdivision, and we do hereby dedicate to the public for public use all streets, easements and alleys shown hereon, and we do hereby designate said subdivision as Thornton Subdivision.

IN WITNESS WHEREOF we have set our hands and seals this 25 day of April 1966.

STATE OF OREGON }  
County of Jackson } Richard H. Thornton Adleen A. Thornton

Personally appeared the above named, Richard H. Thornton and Adleen A. Thornton, and acknowledged the foregoing instrument to be their voluntary act and deed.

Before me, this 25<sup>th</sup> day of April 1966.

Margie C. Hochner  
Notary Public for Oregon

My Commission expires the 13<sup>th</sup> day of April 1970.

### SURVEYOR'S CERTIFICATE

STATE OF OREGON }  
County of Jackson } L. E. Ager

I, L. E. Ager, a duly registered Surveyor of the State of Oregon, being first duly sworn, do hereby certify that I have correctly surveyed and marked with the proper monuments as provided by law, the tract of land hereon shown and the said plat is a correct representation of the same, and the following is an accurate description of the boundary lines: Beginning at a point on the South line of Block 2 of Franeva Heights Subdivision, in the City of Ashland, Jackson County, Oregon, according to the official Plat thereof, now of record, which point bears S. 89°59'15" W. 3.50 feet from the Southeast corner of said Block, Said point also being 59.65 feet West and 1474.99 feet South of the Southwest Corner of D.L.C. No. 38, T. 39 S., R. 1 E., W. M.; Thence N. 89°59'15" E. 3.50 feet to the West Line of Prim St., thence S. 0°30'25" E. along said street, 20.73 feet; thence S. 38°40' E. 43.32 feet to the East line of lot 9, Nickell Plate Addition; thence S. 0°30'25" E. along the East line of said Lot 9 and the East line of Lot 10, 258.48 feet to the Southeast corner of said Lot 10; thence S. 89°59'15" W. along the South line of Lot 10, 241.61 feet to the Easterly line of Thornton Way; thence N. 2°15'35" W. along said line 313.26 feet to the Southwest corner of said Block 2; thence N. 89°59'15" E. along the South line of Franeva Heights Subdivision, 220.89 feet to the point of beginning. Subject to a strip of land 3.50 feet in width along the entire Easterly line of the above described tract, dedicated for Street Purposes.

L. E. Ager  
SURVEYOR

Subscribed and sworn to before me this 25<sup>th</sup> day of April 1966

Margie C. Hochner  
Notary Public for Oregon

My Commission expires the 13<sup>th</sup> day of April 1970.

For order of the County Court approving this plat see Volume 63 Page 806 of County Commissioners Journal of Proceedings.

Camradell  
County Clerk

Deputy

Filed for record this the 20 day of May, 1966, at 2:13 P.M. and recorded in Volume 10 of plats at page 35 of records of Jackson County.

Camradell  
County Clerk

Deputy

I hereby certify that this tracing is an exact copy of the original plat.

L. E. Ager  
SURVEYOR

Examined and approved by the City of Ashland Planning Commission in session this 9<sup>th</sup> day of May, 1966.

Gilda L. King  
Secretary

Ed. Jungmaster  
President

Examined and approved for the City of Ashland this 9<sup>th</sup> day of May, 1966.

Allen A. Aising  
City Engineer

Examined and approved this 13<sup>th</sup> day of May, 1966.

Thad W. Hatten  
County Assessor

Howard Wood  
Deputy

All taxes Paid to date this the 13<sup>th</sup> day of May, 1966.

DeLormond Knight  
County Sheriff

