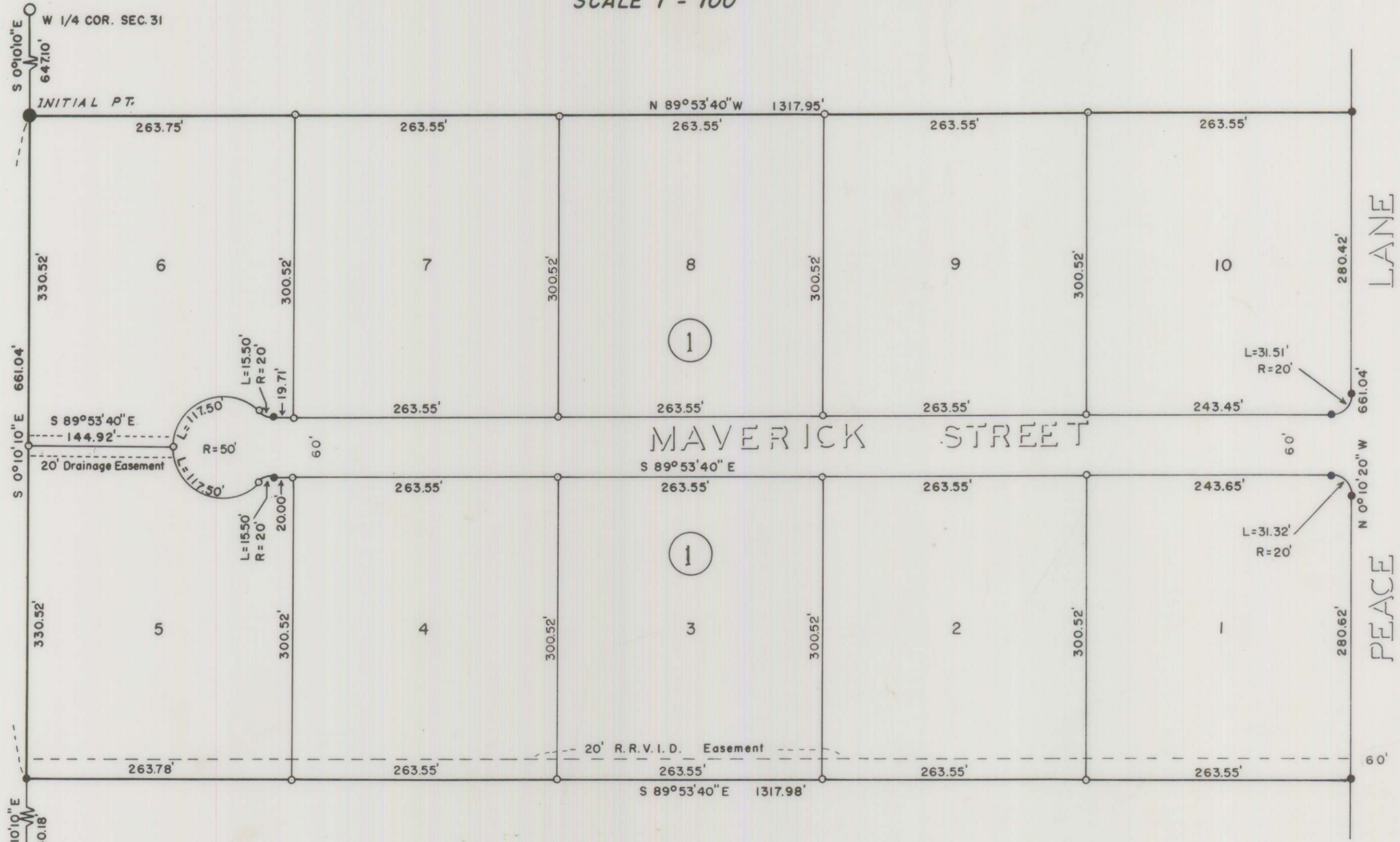


COOPER SUBDIVISION UNIT NO. 1
 LOCATED IN SW 1/4 SEC. 31, T36S, R1W, WM.
 SCALE 1" = 100'



SURVEYOR'S CERTIFICATE

STATE OF OREGON
 County of Jackson SS

I, EDWARD A. MCGINTY, a duly registered Surveyor of the State of Oregon, being first duly sworn, do hereby certify that I have correctly surveyed and marked with the proper monuments as provided by law the tract of land hereon shown and the said plat is a correct representation of the same, and the following is an accurate description of the boundary lines. Commencing at the West 1/4 corner of section 31, Township 36 South, Range 1 West, Willamette Meridian, Jackson County, Oregon; thence South 0°10'10" East along the West line of said section, 647.10 feet to the Initial Point being a 2 inch iron pipe 36 inches long and 6 inches deep; thence South 0°10'10" East 661.04 feet; thence South 89°53'40" East 1,317.98 feet to the West line of Peace Lane; thence North 0°10'20" West 661.04 feet; thence North 89°53'40" West 1,317.95 feet to the Initial Point.

Edward A. McGinty
 Surveyor

Subscribed and sworn to before me this 4th day of May 1966

J.M. Carter
 Notary Public for Oregon
 My Commission expires the 12th day of November 1967

Examined and approved by the Rogue River Valley Irrigation District in regular session this 7 day of June 1966

Attest:
Ronald W. Linton Sec. *Otto Bohnert* Pres.

Examined and approved this 31st day of May 1966

Paul W. Hatten by Paul McCarthey
 County Assessor *Alm. Asst.*
Dr. Leonard High
 County Sheriff
Kevin Merkel, M.D.
 County Health Officer

All taxes paid in full to date this 31st day of May 1966

Examined and approved for the use of individual wells and individual sewage disposal facilities this 12 day of May 1966

Examined and approved by the Jackson County Planning Commission in regular session this 22nd day of JUNE 1966
 Attest: *Ray Lambert* Sec. *Gerald T. Lathan* Pres.

Examined and recommended for approval by the County Court this 16th day of JUNE 1966

Jack E. Boyden
 County Surveyor
Emy Adell
 County Clerk

For order of County Court approving this plat see Volume _____, Page _____, of County Commissioners Journal of Proceedings

Filed for record this 24 day of June 1966 at 2:51 o'clock P.M. and recorded in Volume 10 of Plats at Page 41 of Records of Jackson County

I HEREBY CERTIFY THAT THIS TRACING IS AN EXACT COPY OF THE ORIGINAL PLAT.

Emy Adell
 County Clerk
Edward A. McGinty
 SURVEYOR

Water from Rogue River Valley Irrigation District is delivered exclusively at the present point of delivery, being the S 1/4 Cor S 31, T36S, R1W, WM. JCO



DEDICATION

KNOW ALL MEN BY THESE PRESENTS that we CLAUD W. HOOVER and SHERWIN K. COOPER and LOUISE ANNE COOPER are the owners in fee simple of the lands hereon described and that we have subdivided the same into lots, blocks, and streets as shown hereon, and the number and size of the lots and the length of all lines are plainly set forth, and that this plat is a correct representation of the said subdivision, and we do hereby dedicate to the public for public use all streets, and shown hereon and we do hereby designate said subdivision as COOPER SUBDIVISION UNIT NO. 1 in WITNESS WHEREOF we have set our hands and seals this 10 day of May 1966

Claud W. Hoover *Sherwin Cooper*

Louise Cooper

STATE OF OREGON SS
 County of Jackson
May 10, AD 1966

Personally appeared the above named CLAUD W. HOOVER and SHERWIN K. COOPER and LOUISE ANNE COOPER and acknowledged the foregoing instrument to be their voluntary act and deed. Before me

Lorraine A. Beard
 Notary Public for Oregon

My Commission expires the 17 day of May 1966

- = 1" I. Pipe Fd.
- = 2" I. Pipe 36" long, 6" deep
- = 5/8" I. Pin 30" long set flush
- = 5/8" I. Pin 24" long set flush
- ⊙ = Spike set from R.P.

